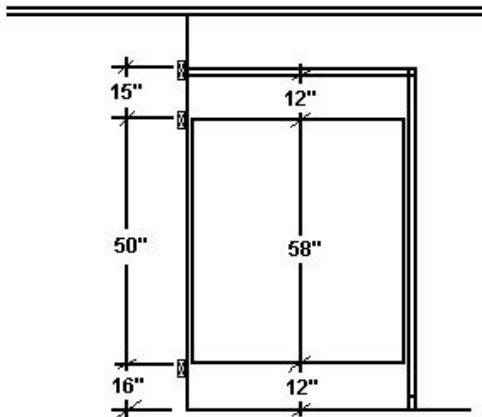
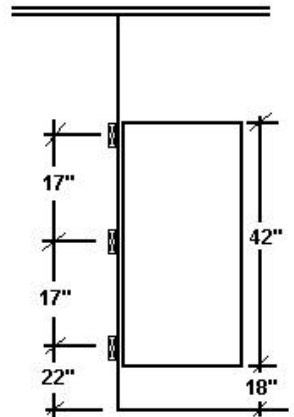


FRONT ELEVATION



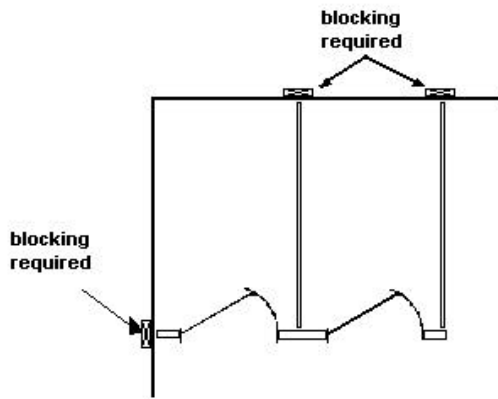
PANEL ELEVATION



WALL HUNG URINAL

SCREEN

OVERHEAD BRACED



TYPICAL FLOOR PLAN

See layout drawings for specific job dimensions

IMPORTANT NOTE

ALL COMPARTMENTS INSTALLED ON HOLLOW WALL CONSTRUCTION MUST BE SECURED TO 2 X 6 WOOD BLOCKING AS SHOWN IN THIS DRAWING.

AMPCO WILL NOT BE RESPONSIBLE FOR INSTALLATIONS WITHOUT ADEQUATE WOOD BACKING AND ALL GUARANTEES ARE VOID.

GENERAL CONTRACTOR MUST INSTALL BACKING PROPERLY AS WALLS ARE ERECTED.

MATERIALS: Low pressure plastic laminate to NEMA standards, color from selection offered. Core 3 ply 45# density particleboard.

CONSTRUCTION: All external faces and edges bonded with plastic laminate. Finish thickness; pilasters and leg screens 1-1/4", doors 7/8", panels and urinal screens 3/4".

HARDWARE: All hardware polished chrome heavy cast non-ferrous alloy. Gravity type bottom hinge and top pivot set with steel pins, nylon cams and fully adjustable. Lift-off emergency release slide latch and keeper. All brackets and bumper-hook provided. Headrail brite anodized aluminum, anti-grip. One way attachments.